

# POWERFLEX®

## PART NUMBER

# PFF19-1902

## DESCRIPTION

### FRONT ARM REAR BUSH

## INSTALLATION GUIDE

### Contents (parts per pack):

2 x Polyurethane A Bushes    1 x Grease

2 x Polyurethane B Bushes

Please read the complete fitting instructions and check package components before fitment. These fitting instructions are to be used as a guide and in conjunction with workshop manual.

It is recommended that:

- all work to be carried out by a licensed technician;
- all safety precautions adhered to;
- wheel alignment to be checked and adjusted as required after any suspension work.
- All fasteners must be tensioned to manufacturer's torque settings.

### Fitting Instructions:

1. Remove the bracket from the arm and remove the original bush from the bracket.
2. Clean any dirt or corrosion off the bracket and file off any sharp edges.
3. With the chamfered edge of part B facing the rear of the car, push the bush into the bracket, as shown in Figure 1.
4. Apply some of the supplied grease into the bore of part B and on the shaft of part A.
5. Push part A into the bore of part B while it is in the bracket.
6. Refit the bracket back onto the arm and tension all hardware to manufacturers recommended torque settings.

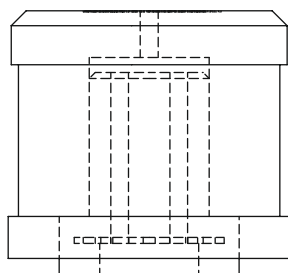


Figure 2 - diagram showing part A and part B fitted into each other

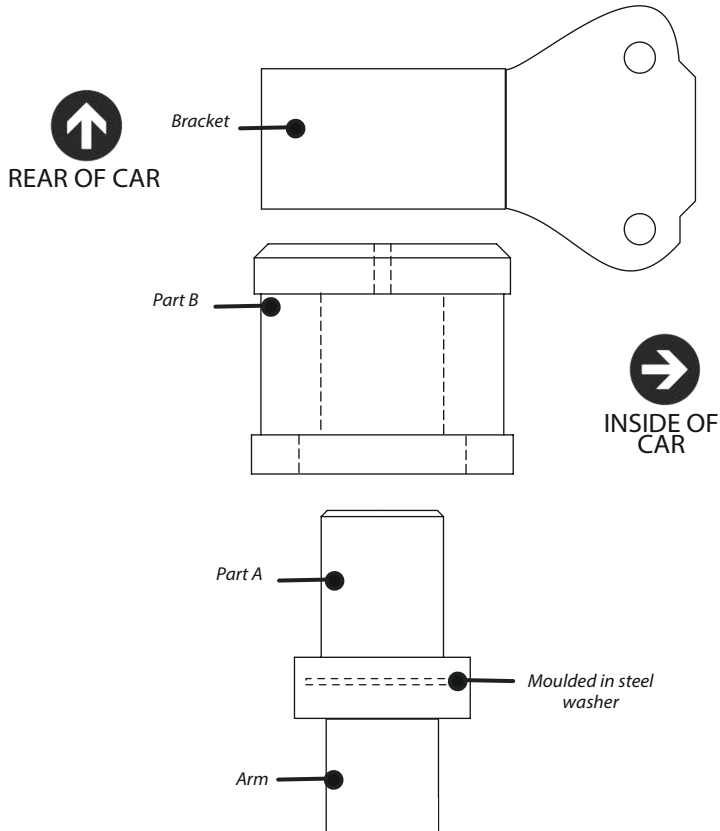


Figure 1 - diagram showing how part A and part B fits inside the bracket and into each other